

# Human Cell Types

Discover our broad range of human cell types, including human primary cells, stem cells and blood cells.

## Human Primary Cells

### Respiratory System

#### Human Nasal Epithelial Cells (HNEpC)

Cat. No. C-12620

#### Human Tracheal Epithelial Cells (HTEpC)

Cat. No. C-12644

#### Human Tracheal Smooth Muscle Cells (HTSMC)

Cat. No. C-12565

#### Human Bronchial Epithelial Cells (HBEpC)

Cat. No. C-12640

#### Human Bronchial Smooth Muscle Cells (HBSMC)

Cat. No. C-12561

#### Human Pulmonary Artery Endothelial Cells (HPAEC)

Cat. No. C-12241

#### Human Pulmonary Artery Smooth Muscle Cells (HPASMC)

Cat. No. C-12521

#### Human Pulmonary Fibroblasts (HPF)

Cat. No. C-12360

#### Human Pulmonary Microvascular Endothelial Cells (HPMEC)

Cat. No. C-12281

#### Human Small Airway Epithelial Cells (HSAEpC)

Cat. No. C-12642

### Cardiovascular System

#### Human Cardiac Fibroblasts (HCF)

Cat. No. C-12375

#### Human Aortic Adventitial Fibroblasts (HAoAF)

Cat. No. C-12380

#### Human Cardiac Microvascular Endothelial Cells (HCMEC)

Cat. No. C-12285

#### Human Cardiac Myocytes (HCM)

Cat. No. C-12810

#### Human Coronary Artery Endothelial Cells (HCAEC)

Cat. No. C-12221

#### Human Coronary Artery Smooth Muscle Cells (HCASMC)

Cat. No. C-12511

#### Human Aortic Smooth Muscle Cells (HAoSMC)

Cat. No. C-12533

#### Human Saphenous Vein Endothelial Cells (HSaVEC)

Cat. No. C-12231

#### Human Aortic Endothelial Cells (HAoEC)

Cat. No. C-12271

### Musculoskeletal System

#### Human Skeletal Muscle Cells (SKMC)

Cat. No. C-12530

#### Human Chondrocytes (HCH)

Cat. No. C-12710

#### Human Osteoblasts (HOB)

Cat. No. C-12720

### Skin & Connective Tissue

#### Human Follicle Dermal Papilla Cells (HFDPC)

Cat. No. C-12071

#### Normal Human Dermal Fibroblasts (NHDF)

Cat. No. C-12300/C-12302

#### Human Dermal Blood Endothelial Cells (HDBEC)

Cat. No. C-12211/C-12225

#### Human Dermal Lymphatic Endothelial Cells (HDLEC)

Cat. No. C-12216/C-12217

#### Human Dermal Microvascular Endothelial Cells (HDMEC)

Cat. No. C-12210/C-12212

#### Normal Human Epidermal Keratinocytes (NHEK)

Cat. No. C-12001/C-12003

#### Normal Human Epidermal Keratinocytes (NHEK) GM3

Cat. No. C-12011/C-12013

#### Normal Human Epidermal Melanocytes (NHEM)

Cat. No. C-12001/C-12003

#### Normal Human Epidermal Melanocytes M3 (NHEM M3)

Cat. No. C-12422/C-12413

### Umbilical Cord

#### Human Umbilical Vein Endothelial Cells (HUVEC)

Cat. No. C-12200

#### Human Umbilical Vein Endothelial Cells 2 (HUVEC 2)

Cat. No. C-12206

#### Human Umbilical Artery Endothelial Cells (HUAEC)

Cat. No. C-12202

#### Human Umbilical Artery Smooth Muscle Cells (HUASMC)

Cat. No. C-12500

### Uterus

#### Human Uterine Fibroblasts (HUF)

Cat. No. C-12385

#### Human Uterine Microvascular Endothelial Cells (HUtMEC)

Cat. No. C-12295

#### Human Uterine Smooth Muscle Cells (HUtSMC)

Cat. No. C-12575

### Kidney

#### Human Renal Epithelial Cells (HREpC)

Cat. No. C-12665

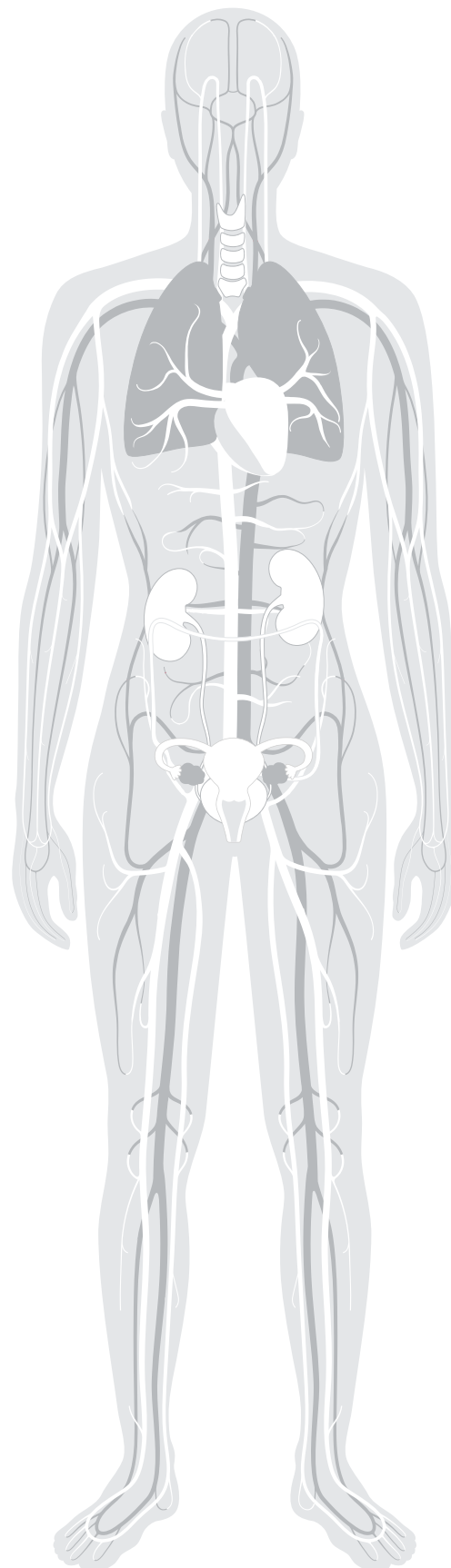
#### Human Renal Cortical Epithelial Cells (HRCEpC)

Cat. No. C-12660

### Adipose Tissue

#### Human White Preadipocytes (HWP)

Cat. No. C-12732/C-12735



# Human Stem Cells



## Bone Marrow

Human Mesenchymal Stem Cells from bone marrow (hMSC-BM)  
Cat. No. C-12974



## Adipose Tissue

Human Mesenchymal Stem Cells from adipose tissue (hMSC-AT)  
Cat. No. C-12977



## Umbilical Cord and Placenta

Human Pericytes from Placenta (hPC-PL)  
Cat. No. C-12980

Human Mesenchymal Stem Cells from umbilical cord matrix (hMSC-UC)  
Cat. No. C-12971

# Human Blood Cells



## Peripheral Blood

Human Mononuclear Cells from peripheral blood (hMNC-PB)  
Cat. No. C-12907

Human CD14+ Monocytes (hMoCD14+-PB)  
Cat. No. C-12909

Human M1 Macrophages (GM-CSF) monocyte-derived  
Cat. No. C-12914

Human M2 Macrophages (M-CSF) monocyte-derived  
Cat. No. C-12915



## Umbilical Cord

Human Mononuclear Cells from umbilical cord blood (hMNC-CB)  
Cat. No. C-12901

Human CD34+ Progenitor Cells (hCD34+-CB)  
Cat. No. C-12921

# Discover

Customize your primary cell requirements based on specific donor criteria.

Learn more:

[page.promocell.com/donor-type-request](https://page.promocell.com/donor-type-request)

**PromoCell GmbH**  
Sickingenstr. 63/65  
69126 Heidelberg  
Germany

**USA/Canada**  
Phone: 1-866-251-2860 (toll free)  
Fax: 1-866-827-9219 (toll free)

**Deutschland**  
Telefon: 0800-776 66 23 (gebührenfrei)  
Fax: 0800-100 83 06 (gebührenfrei)

**France**  
Téléphone: 0800-90 93 32 (ligne verte)  
Téléfax: 0800-90 27 36 (ligne verte)

**United Kingdom**  
Phone: 0800 96 03 33 (toll free)  
Fax: 0800 169 85 54 (toll free)

**Other Countries**  
Phone: +49 6221-649 34 0  
Fax: +49 6221-649 34 40

info@promocell.com  
www.promocell.com

© PromoCell GmbH